

# Parkheath

*Sold on Service*

**Parkhill Road NW3**

**£2,650 PCM (£612 per week) - Camden Band E**



Charming 2 double bedroom apartment

Top (2nd) floor in period house

Super kitchen with all appliances

3 piece bathroom

Well situated for Hampstead Heath

Large private roof terrace

Bright reception with wood floors

Good size main bedroom

Walking distance to Belsize Park tube

EPC Rating D, Council Tax: Camden band E

Belsize Park Office 020 7431 3104

Parkhill Road, Belsize Park, London, NW3

Approximate Gross Internal Floor Area = 74.6 sq m / 804 sq ft

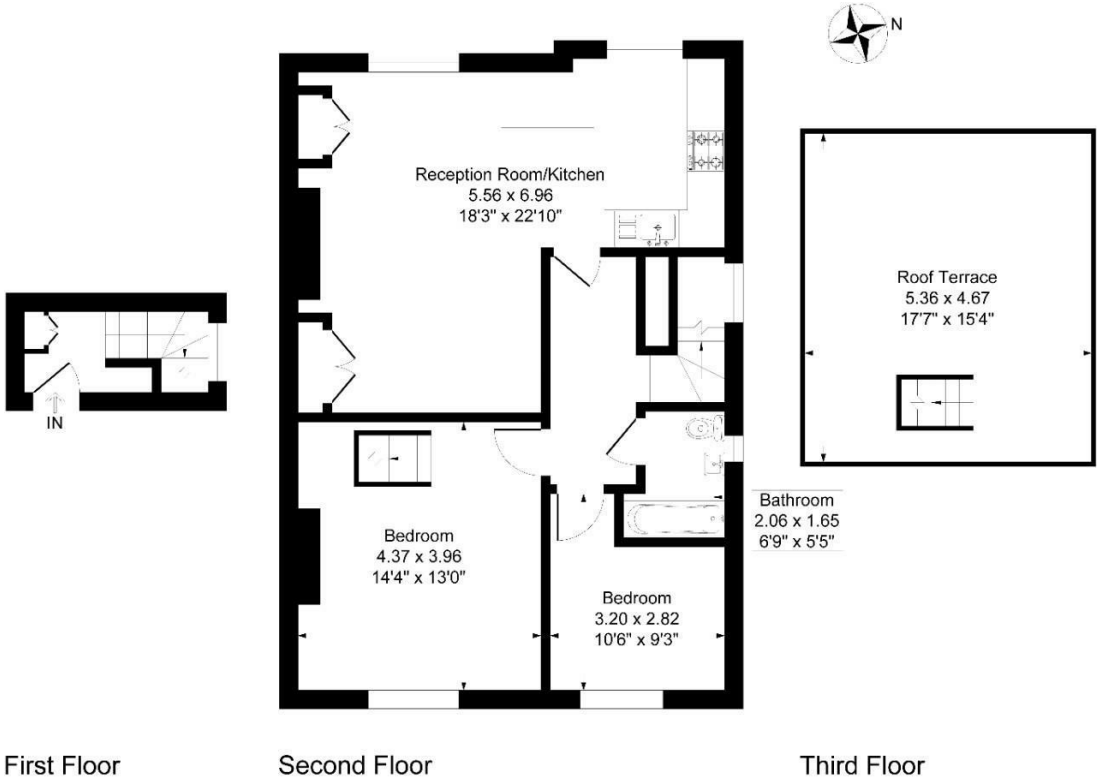


Illustration for identification purposes only, measurements are approximate, not to scale.

The particulars do not constitute part of an offer or contract. The particulars, including text, photographs and plans, are for the guidance only of prospective purchasers/tenants and must not be relied upon as statements of fact. The descriptions provided therein represent the opinion of the author and whilst given in good faith should not be construed as statements of fact. Nothing in these particulars shall be deemed a statement that the property is in good condition or otherwise or that any services or facilities are in good working order. All measurements are approximate